

Programme LIFE+

FRESHWATER PEARL MUSSEL CONSERVATION IN THE ARMORICAN MASSIF

LIFE09 NAT FR 000583

AN ACTION COORDINATED BY :



Bretagne Vivante

Une voix pour la nature

Practical implementation : highlight on the Bonne Chère stream

Letterkenny
Republic of Ireland

15th February 2013

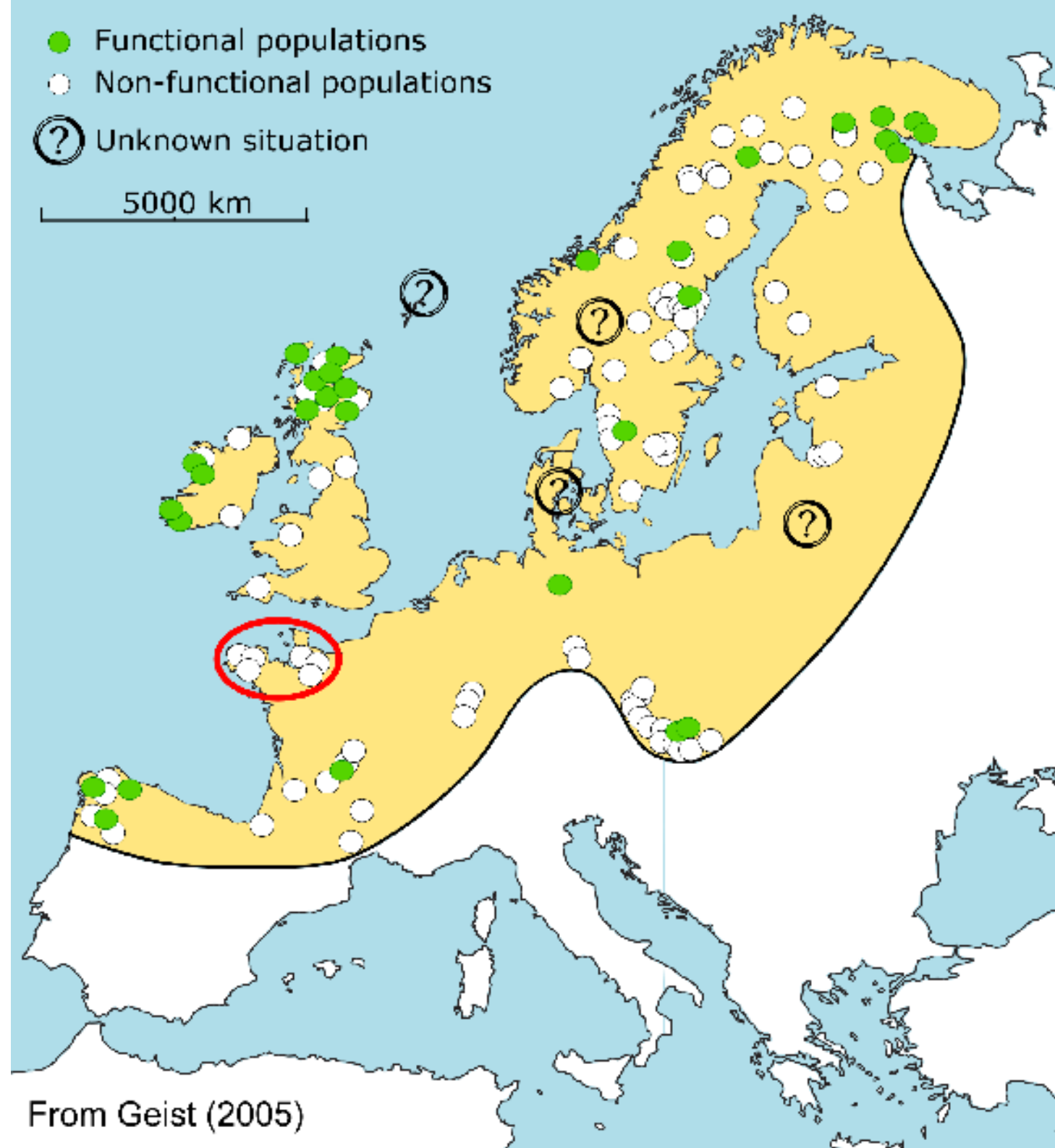
Marie Capoulade
Pierre-Yves Pasco

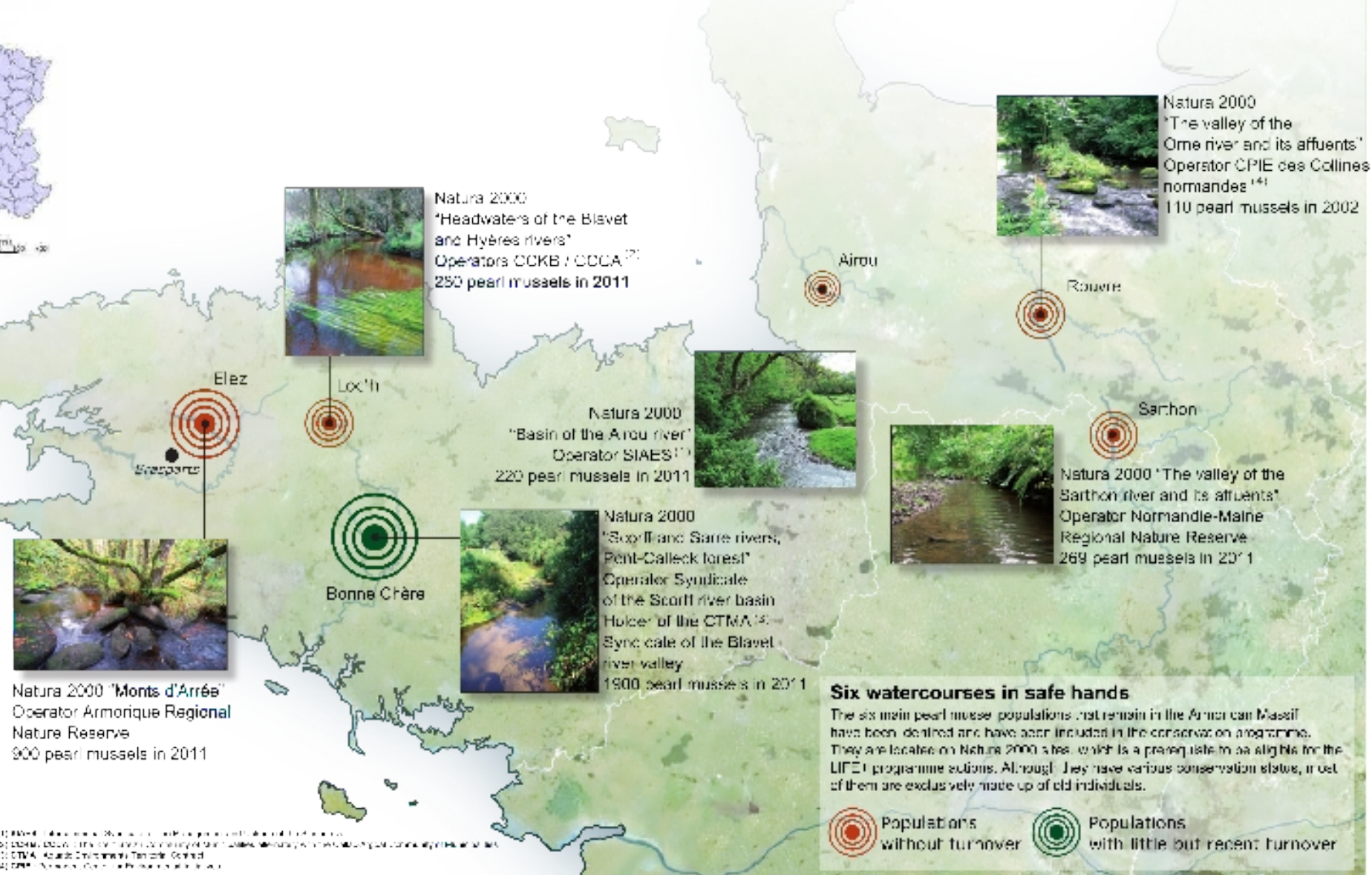
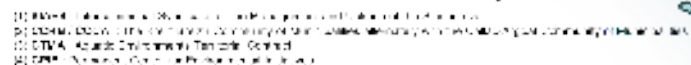
www.life-moule-perliere.org/accueilmoule.php



COLLINES NORMANDES







Main actions

**Environmental
restoration**

= Extra LIFE



**Environmental
control and survey**



**Ex-situ conservation
and reinforcements**





Bonne Chère

Surface of the
catchment (ha)

1 737,3

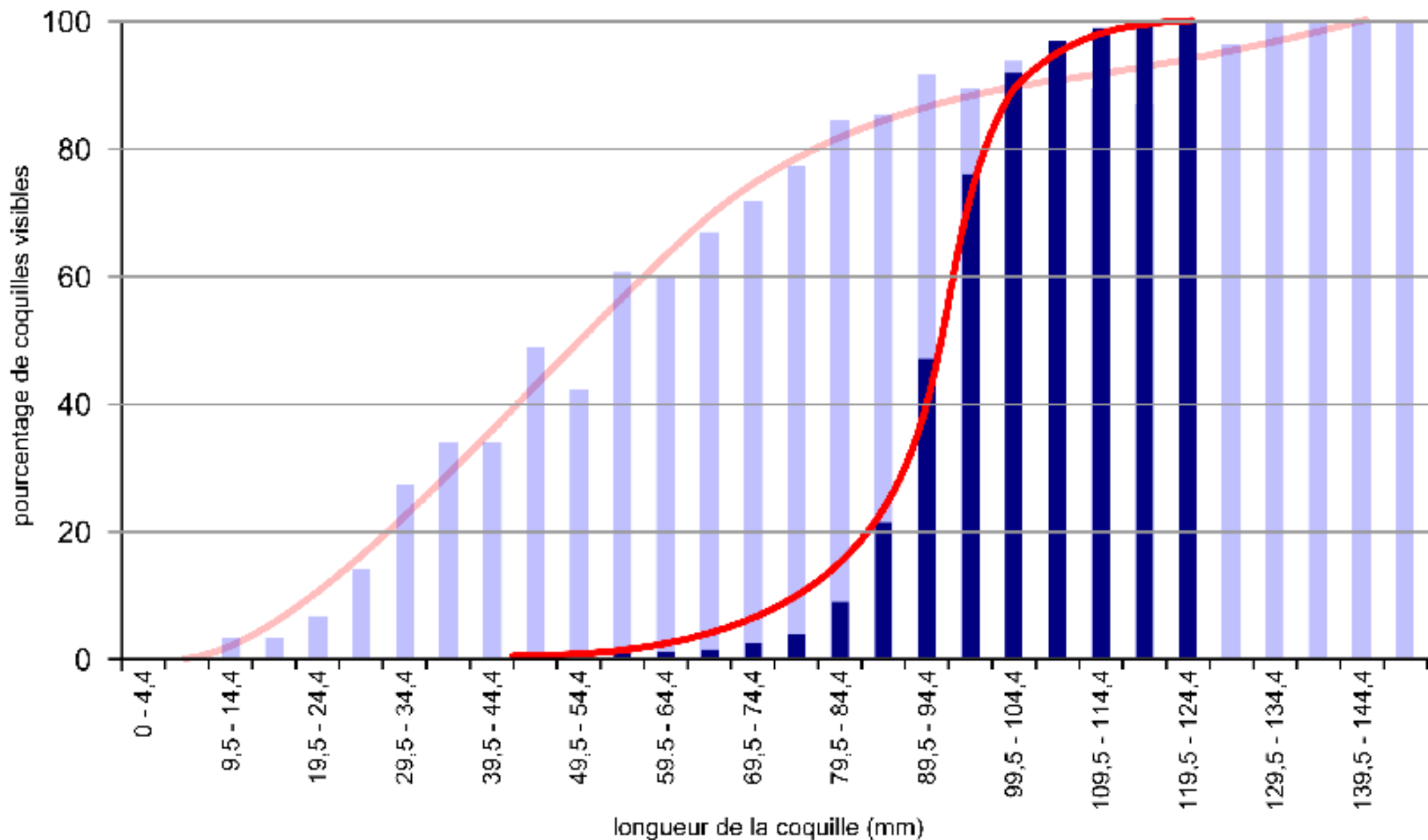
Total linear with
tributaries (km)

26,7









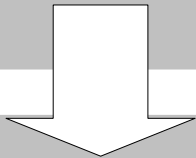
Light chart : functional population (from Degerman, 2009)

Dark chart : Bonne Chère population in 2009 (900 individuals measured)

Black point inventory

Maps of black points

- based on existing data
- on field observations
- by under catchment

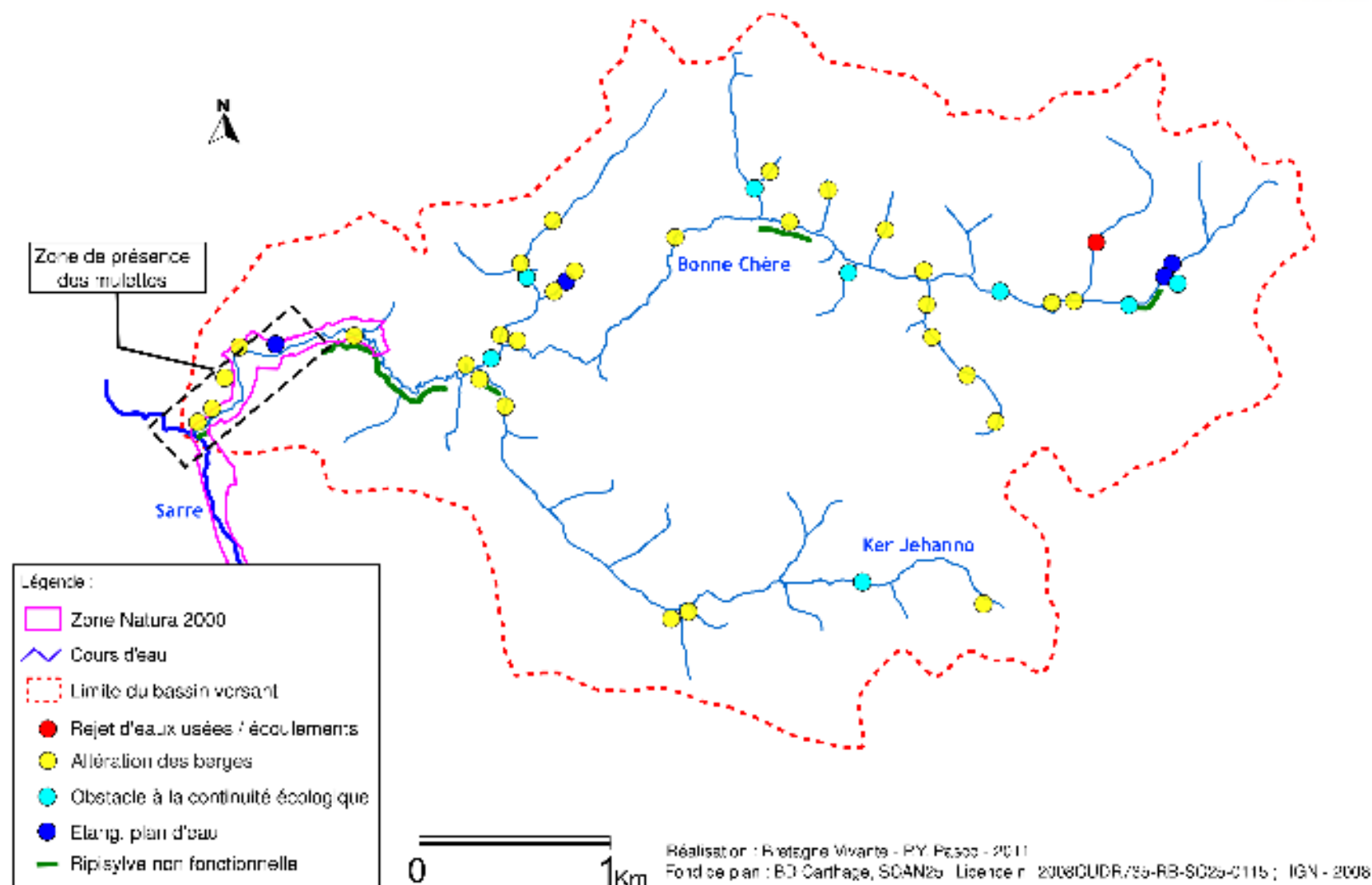


Management plans

- with dialogue
- action list
- protection of sites
- continuity of LIFE actions



Points à résoudre pour améliorer le fonctionnement de la population de moules perlières sur le bassin versant du ruisseau de Bonne Chère



Actions conducted in a « river restoration contract »



Riparian trees maintenance



Suppression of migratory barriers

Actions conducted in a « river restoration contract »



Plantations (shadow)



Willow weaving (river bank protection from cattle)

Actions conducted in a « river restoration contract »



Supply of nose pump

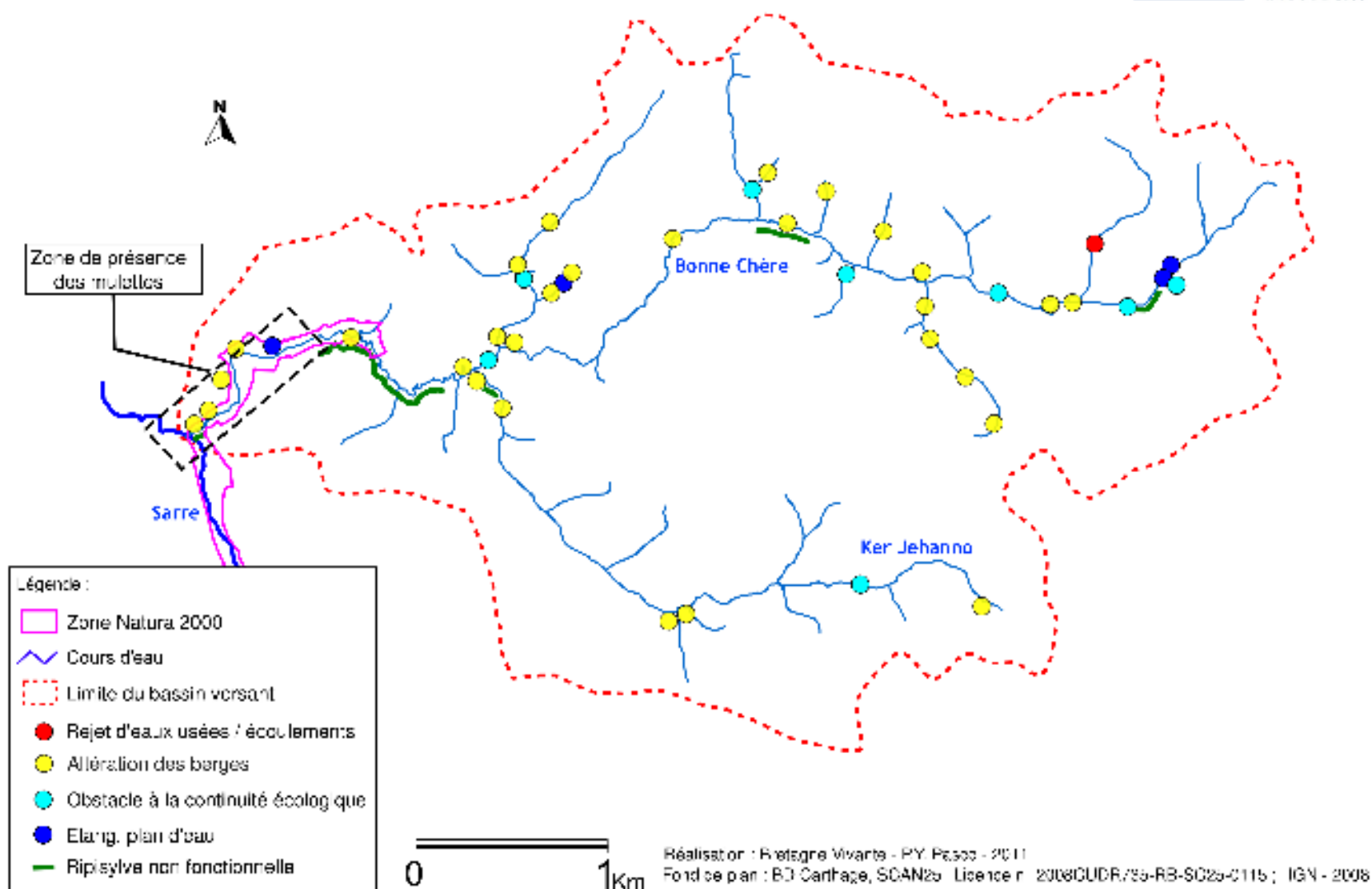


Fences + plantations

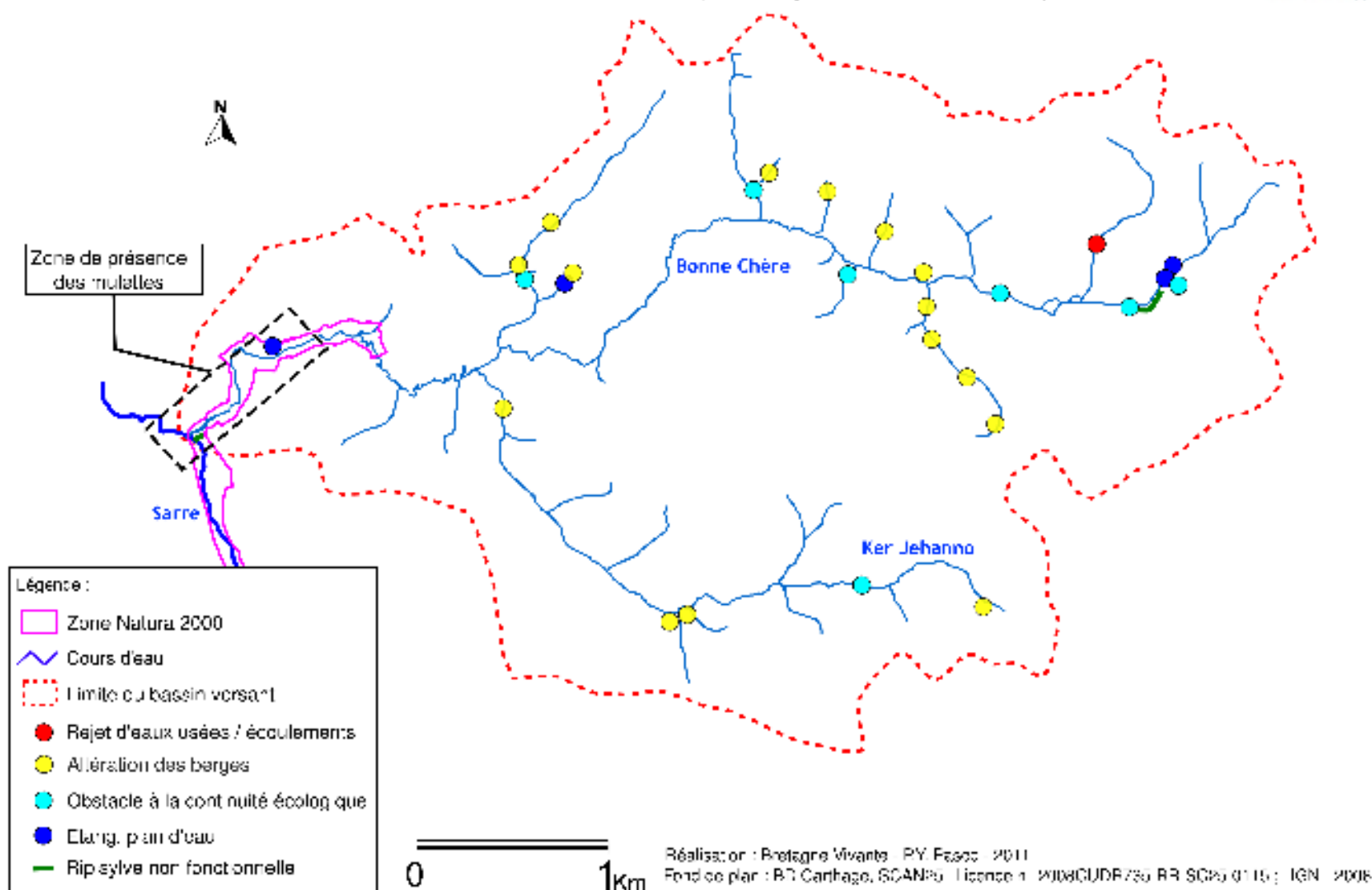


Thanks to owners and farmers for their welcoming.
Thanks to the support of the city of Guern and Malguenac.

Points à résoudre pour améliorer le fonctionnement de la population de moules perlières sur le bassin versant du ruisseau de Bonne Chère



Points à résoudre pour améliorer le fonctionnement de la population de moules perlières
sur le bassin versant du ruisseau de Bonne Chère (mise à jour décembre 2012)



Control & assess environment quality

Assess in long time period
Characterize

Look for favourable habitats

Detect any problems

Water quality



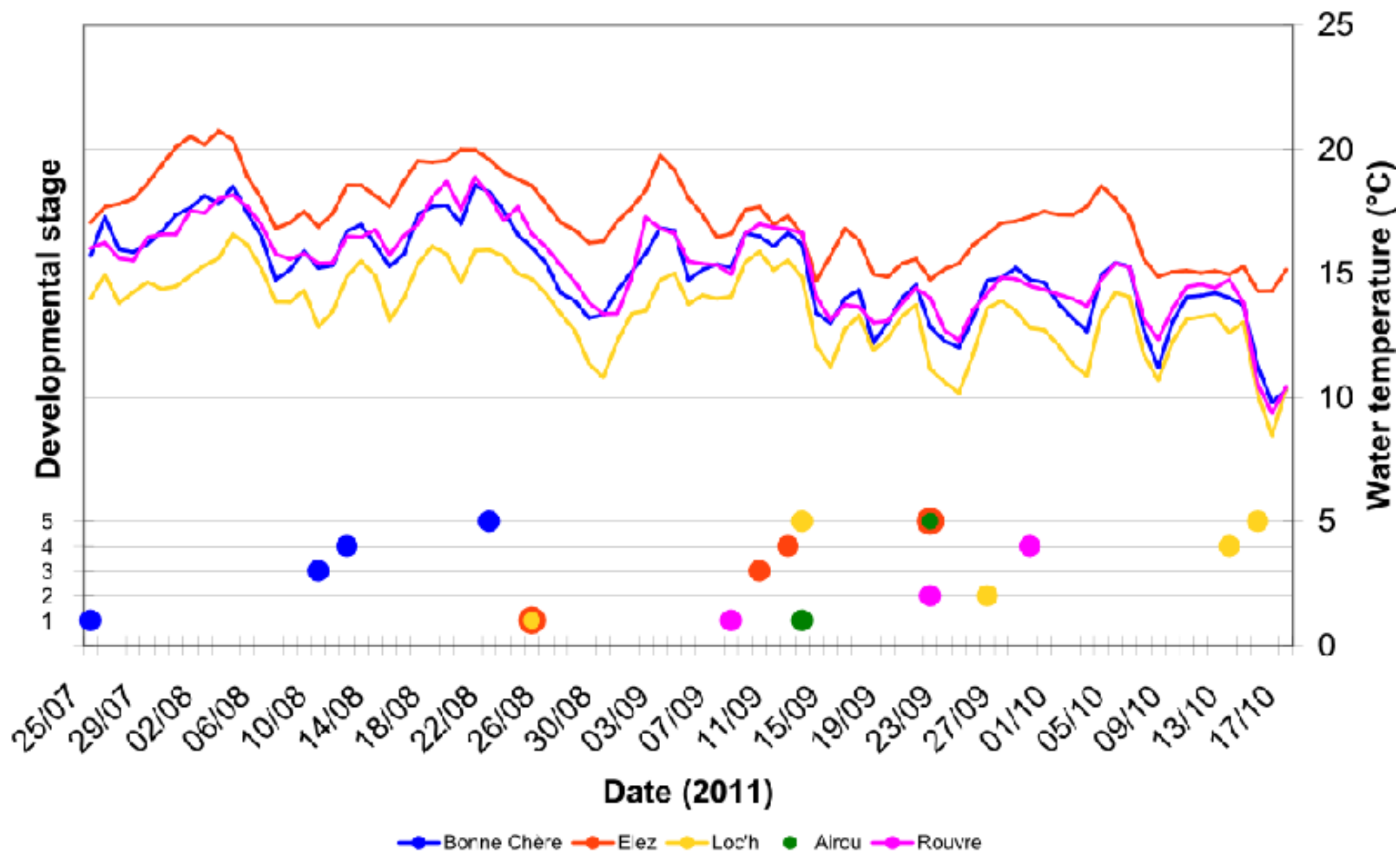
Sediment quality

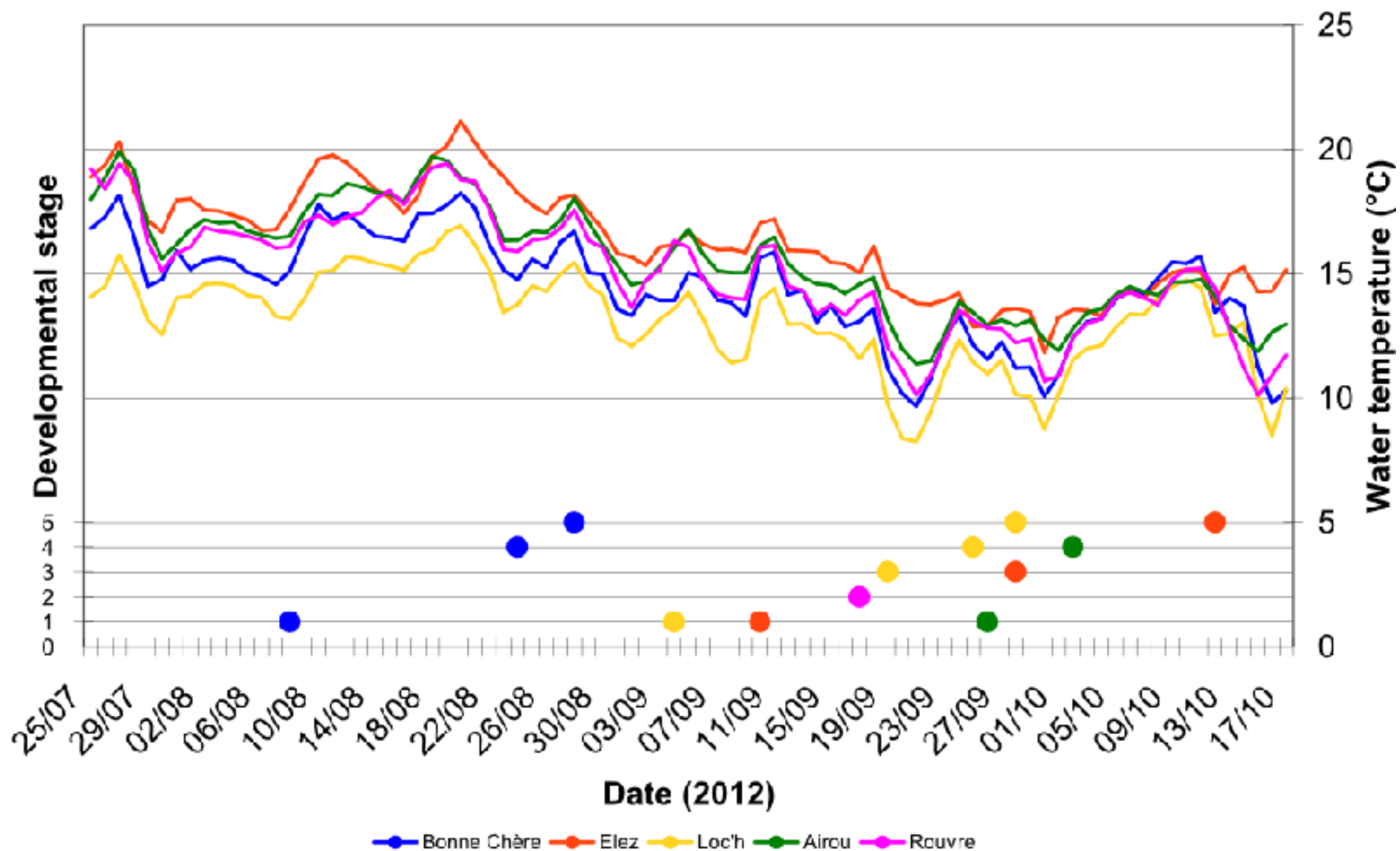


About water quality

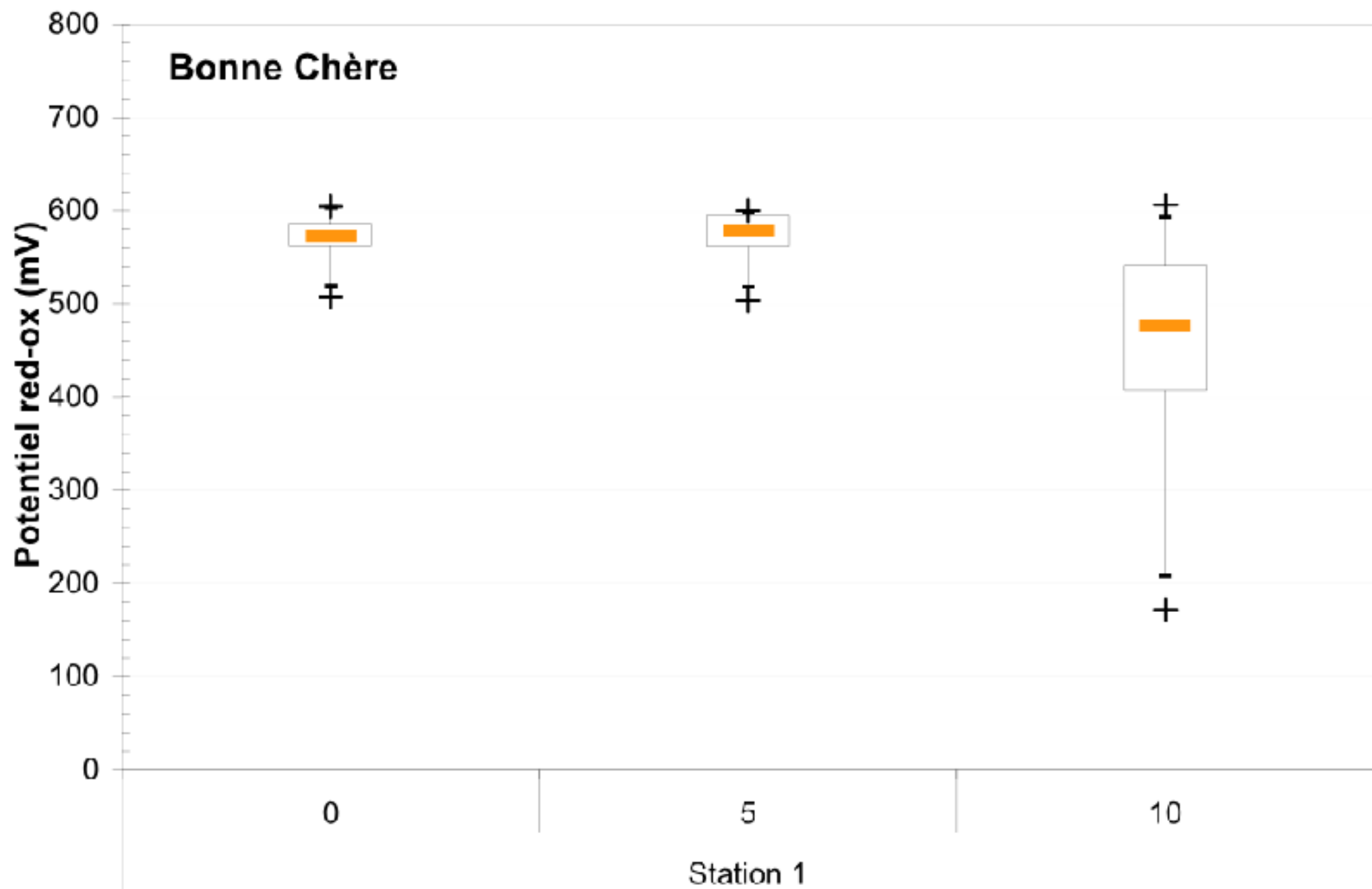
N-NO3	5 mg/L
P-PO4	0,028 mg/L
pH	6,69
Conductivity at 20°C	137 μ S/cm
Saturation oxygen	94 %







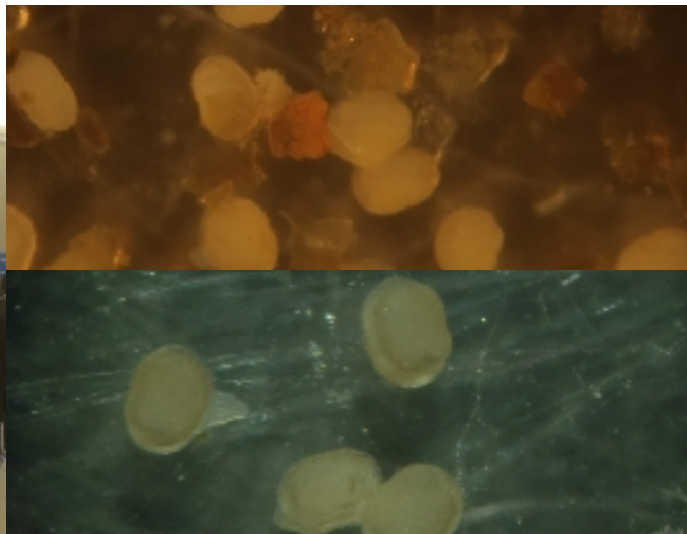
Bonne Chère

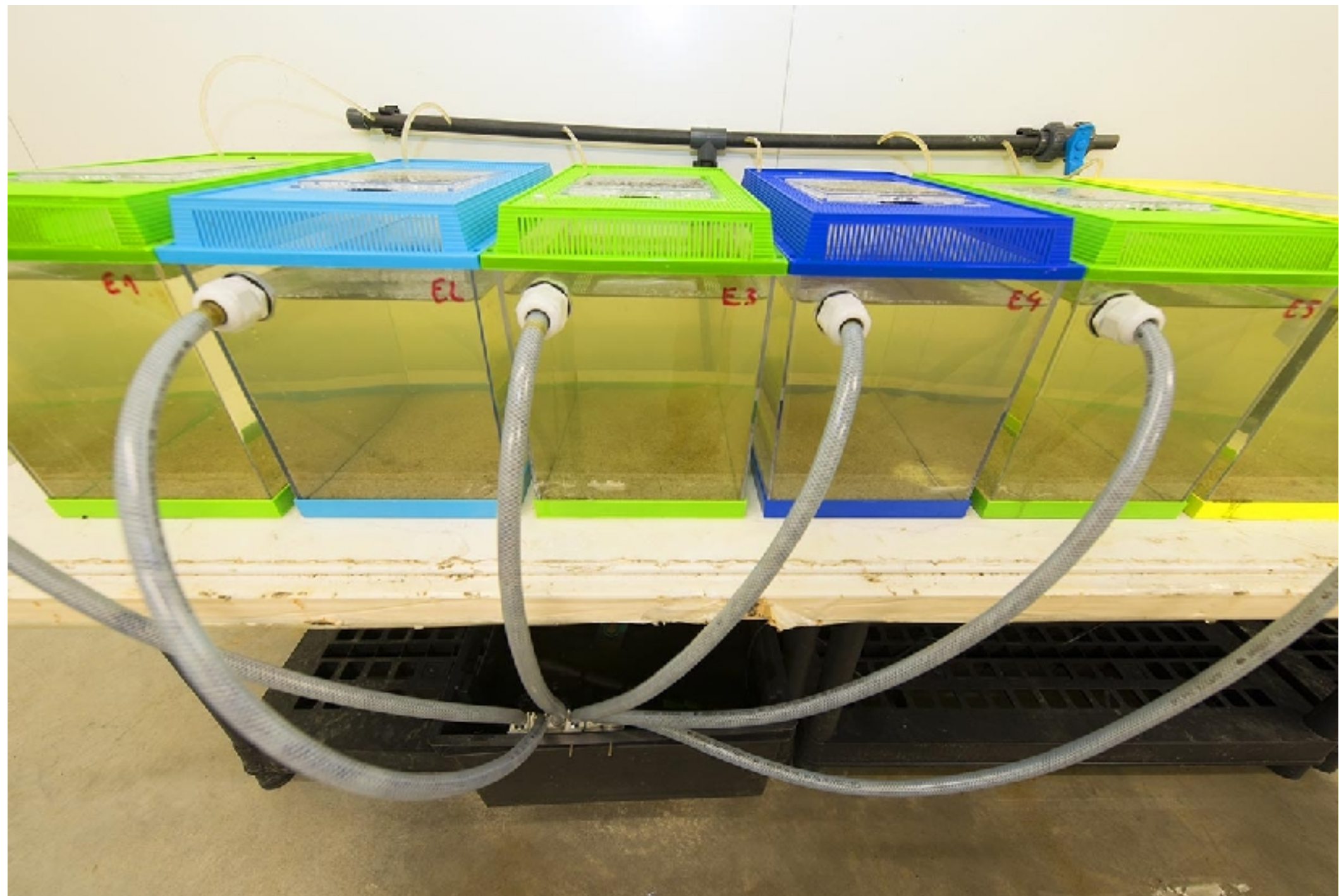


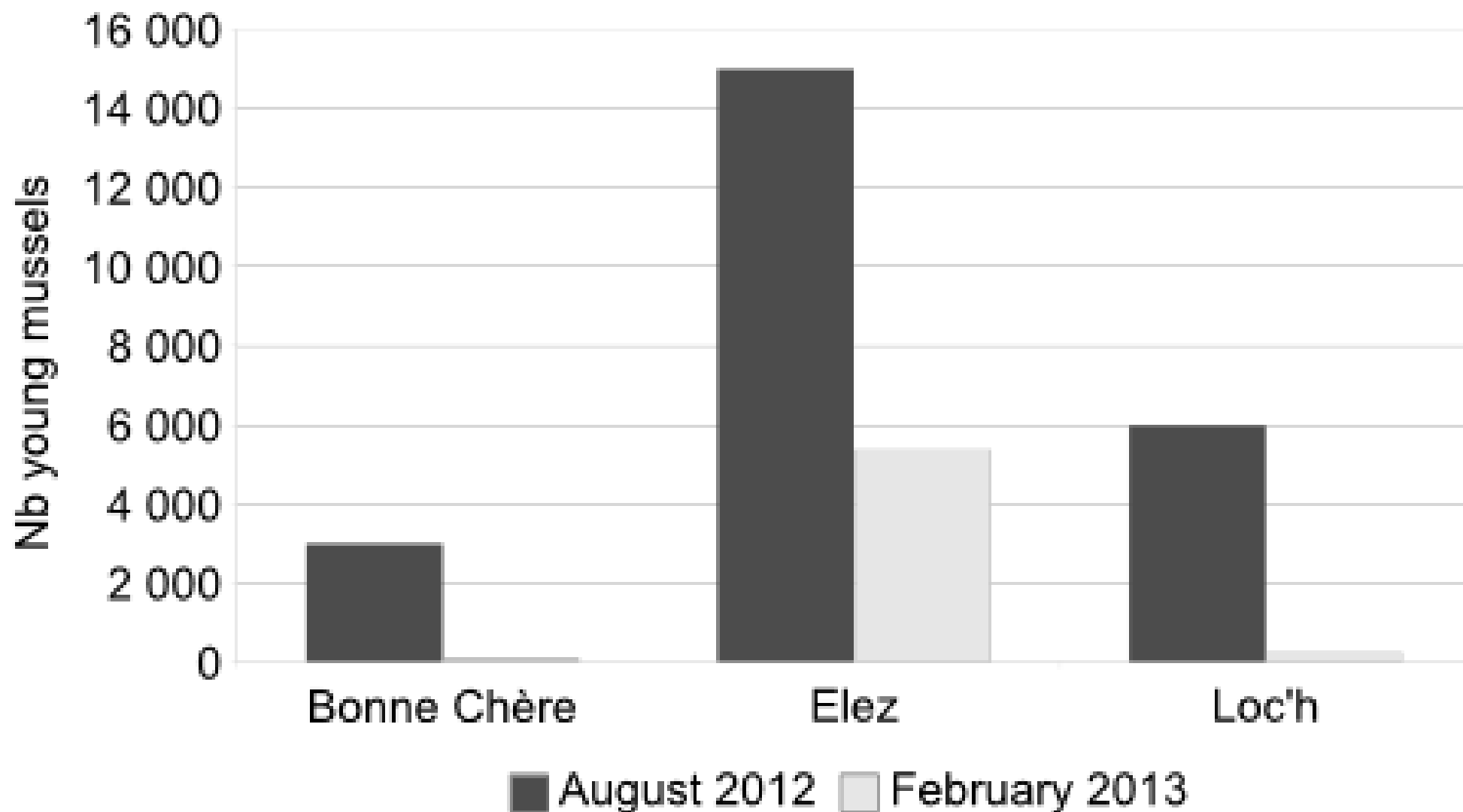
Collect of young mussels

June 2012

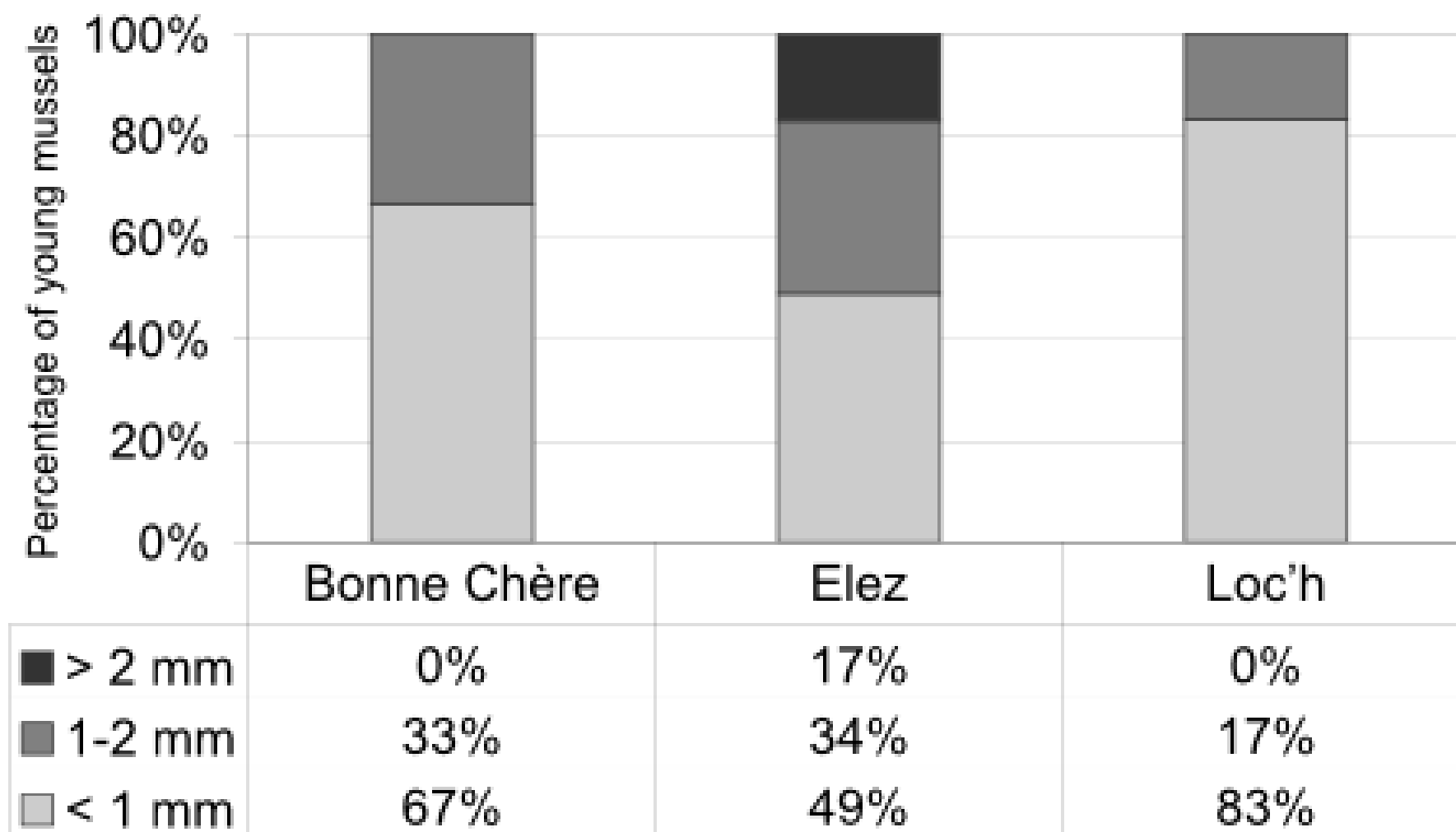
	Period of collect 29/05-29-06	Estimation au 01/08		Nb of mussels reinforced		Estimation au 13/08
Bonne Chère	several millions	3 000		-		-
Elez	several millions	10-15 000		5 millions ?		10-15 000
Loc'h	10 000	8 000		1000		6 000







Extrapolation of the number of young mussels based on sorting of a substrat sample in February 2013 : 39 for Bonne Chère, 5380 for Elez and 254 for Loc'h



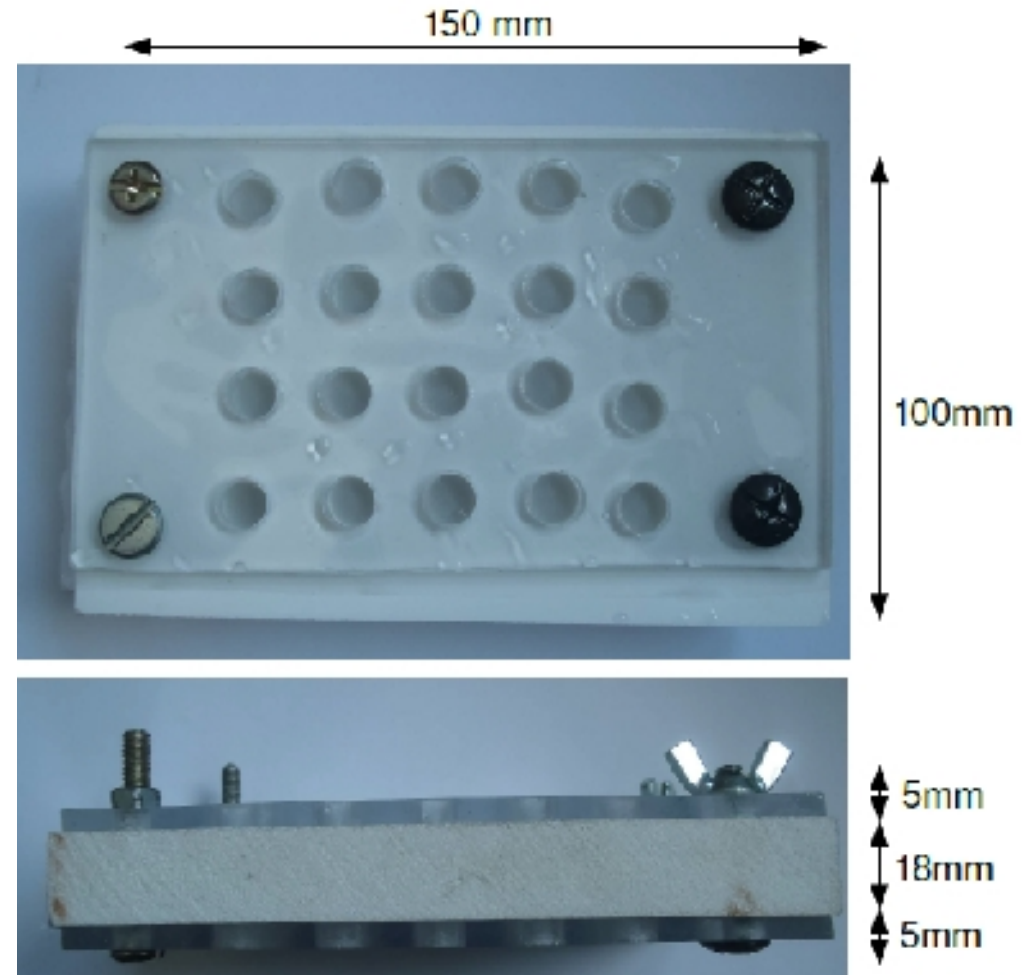
Average size of young mussels in February 2013

Reinforcements

Directs



In situ



Programme LIFE+

FRESHWATER PEARL MUSSEL CONSERVATION IN THE ARMORICAN MASSIF

LIFE09 NAT FR 000583

AN ACTION COORDINATED BY :



Bretagne Vivante

Une voix pour la nature

Thank you



www.life-moule-perliere.org/accueilmoule.php



COLLINES NORMANDES

